

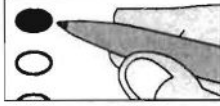
**SAMPLE
BALLOT
Democratic Party
FEDERAL
PRIMARY
ELECTION**

State of Mississippi
Warren County
March 10, 2026



Instructions

To vote, use a black pen to completely fill in the oval to the left of your choice.



To Vote for a Write-In

To vote for a person not on the ballot, completely fill in the oval to the left of the "write-in" line and print the person's name on the line.



To Correct a Mistake

To make a correction, please ask for a replacement ballot. Any marks other than filled ovals may cause your ballot not to be counted.

United States

Senate

Vote for 1

- Scott Colom**
Democrat
- Albert R. Littell**
Democrat
- Priscilla W. Till**
Democrat
- _____
write-in

US House Of Representatives

2nd Congressional District

Vote for 1

- Bennie G. Thompson**
Democrat
- Evan Littleton Turnage**
Democrat
- Pertis Herman Williams III**
Democrat
- _____
write-in

SAMPLE

Thank you for voting.

You have reached the end of the ballot. Please review your ballot selections.

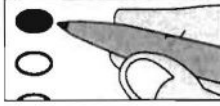
**SAMPLE
BALLOT
Republican Party
FEDERAL
PRIMARY
ELECTION**

State of Mississippi
Warren County
March 10, 2026



Instructions

To vote, use a black pen to completely fill in the oval to the left of your choice.



To Vote for a Write-In

To vote for a person not on the ballot, completely fill in the oval to the left of the "write-in" line and print the person's name on the line.



To Correct a Mistake

To make a correction, please ask for a replacement ballot. Any marks other than filled ovals may cause your ballot not to be counted.

United States

Senate

Vote for 1

Sarah Adlakha
Republican

Cindy Hyde-Smith
Republican

write-in

US House Of Representatives

2nd Congressional District

Vote for 1

Ron Eller
Republican

Kevin Wilson
Republican

write-in

SAMPLE

Thank you for voting.

You have reached the end of the ballot. Please review your ballot selections.